

Installing the Mac® OS X 10.5 Printer driver

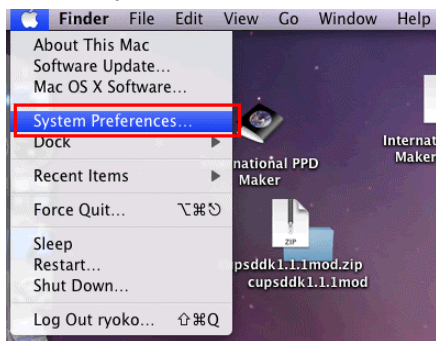
For USB users:

1. Turn off and unplug the machine from the AC outlet and disconnect it from your Macintosh® if you already connected an interface cable.
2. Connect the USB interface cable to your Macintosh®, and then connect it to the machine.

Note:

Do not connect the machine to a USB port on a keyboard or a non-powered USB hub.

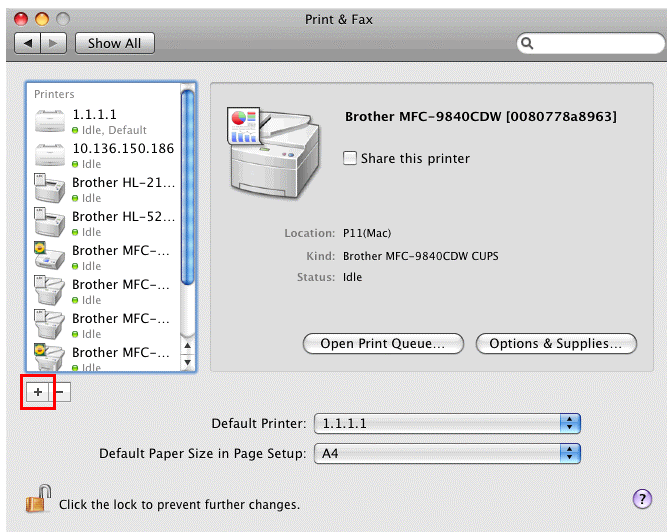
3. Plug the AC power cord into an AC outlet. Turn on the machine.
4. Turn on your Macintosh®.
5. Select “System Preferences” from the Apple Menu.



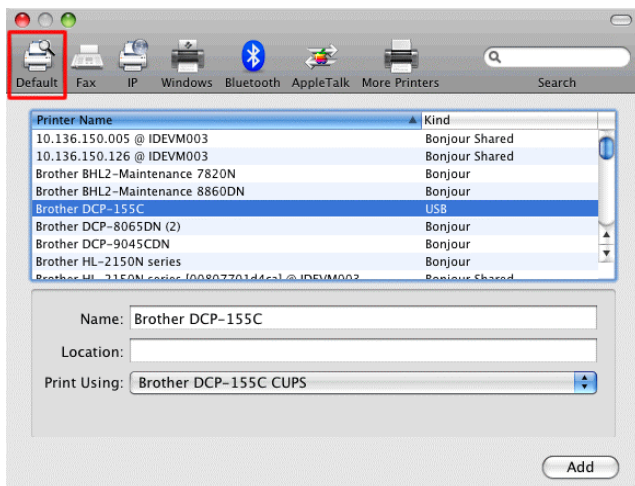
6. Click the “Print & Fax” icon.



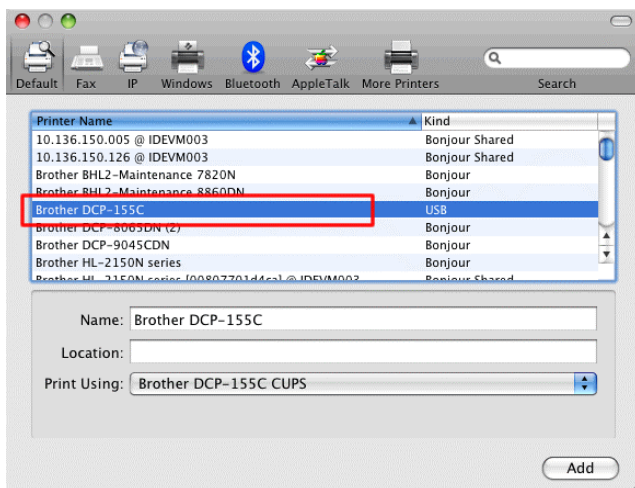
7. Click the “+” button which is located below the “Printers” section.



8. Click the "Default" icon which is located at the top of the dialog box.



9. Select your machine from the “Printer Name” list.

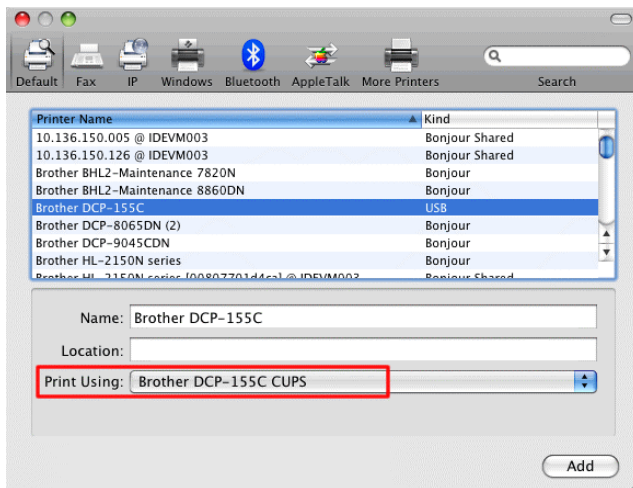


10. For the CUPS Driver:

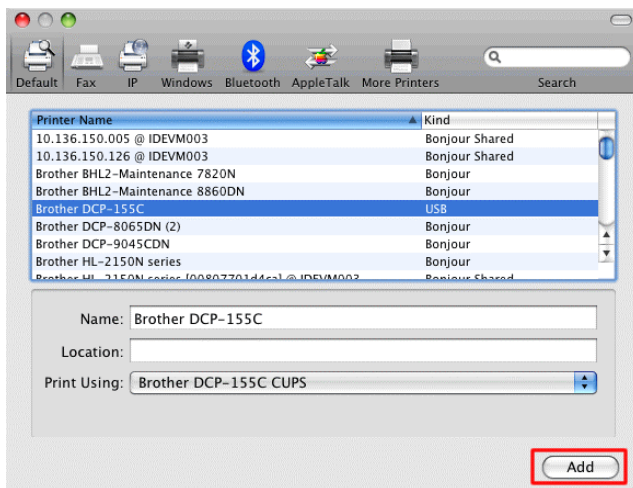
Make sure that "XXXXXXX + CUPS" is selected in the "Print Using" list. (Where XXXXXXXX is your model name.)

For the PostScript Driver:

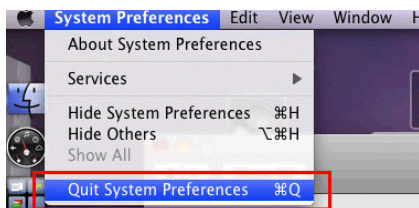
Make sure that "XXXXXXX + PS" or "XXXXXXX + BR-Script3" is selected in the "Print Using" list. (Where XXXXXXXX is your model name.)



11. Click "Add". The printer is now available in the "Print & Fax" list.

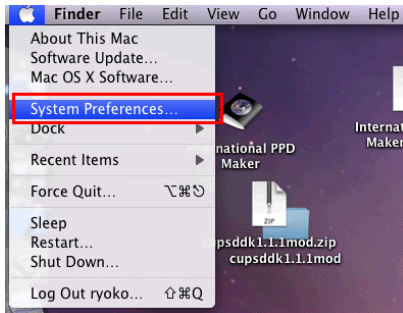


12. Select "Quit System Preferences" from the Apple Menu. The setup is now complete.



For Network users:

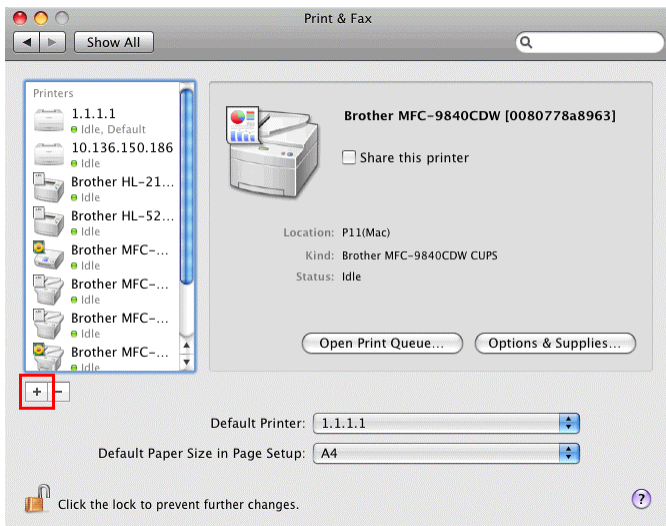
1. Turn off and unplug the machine from the AC outlet and disconnect it from your Macintosh® if you already connected an interface cable.
2. Connect the network interface cable to the machine, and then connect it to a free port on your hub.
3. Plug the AC power cord into an AC outlet. Turn on the machine.
4. Turn on your Macintosh®.
5. Select “System Preferences” from the Apple Menu.



6. Click the “Print & Fax” icon.

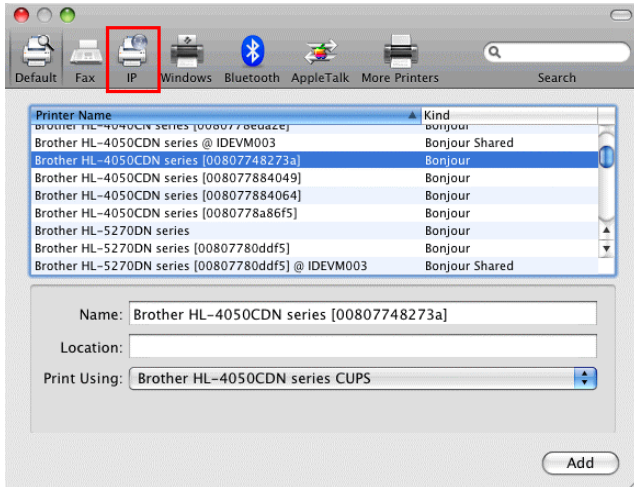


7. Click the “+” button which is located below the “Printers” section.

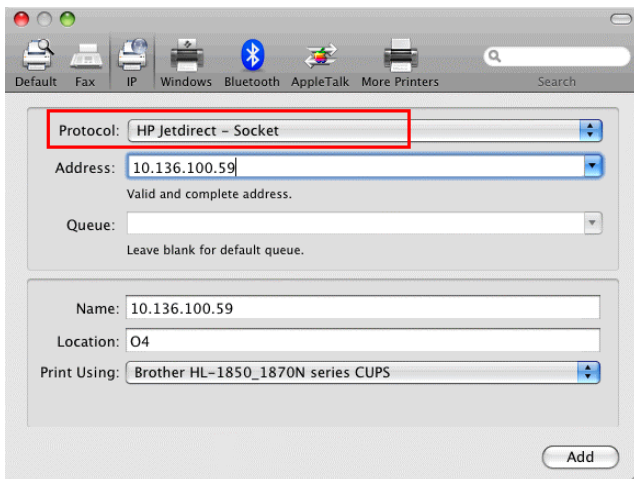


For the CUPS Driver:

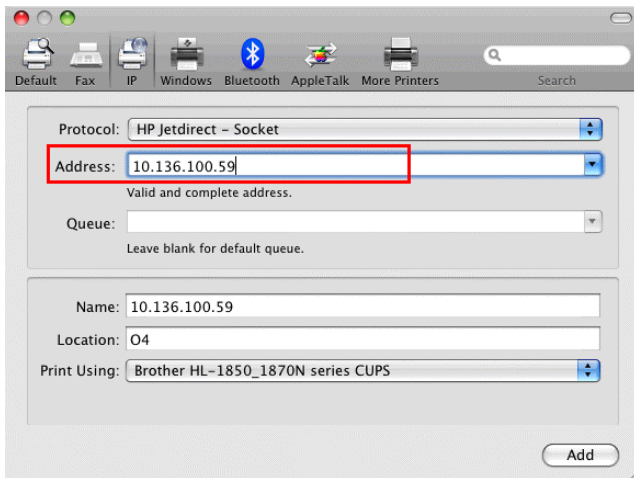
8. Click the "IP" icon which is located at the top of the dialog box.



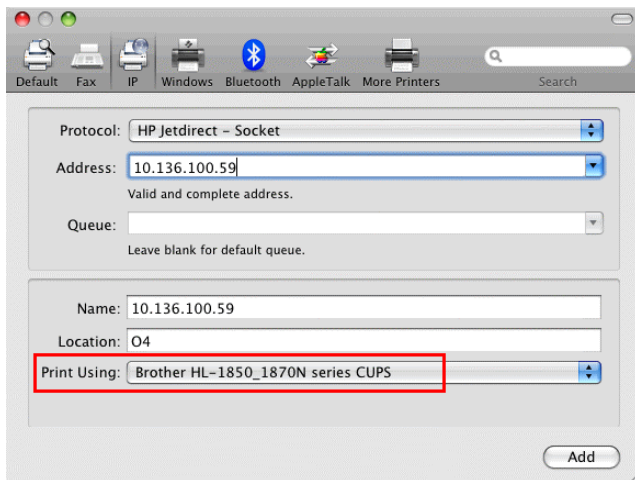
9. Select "HP Jetdirect - Socket" from the "Protocol" list.



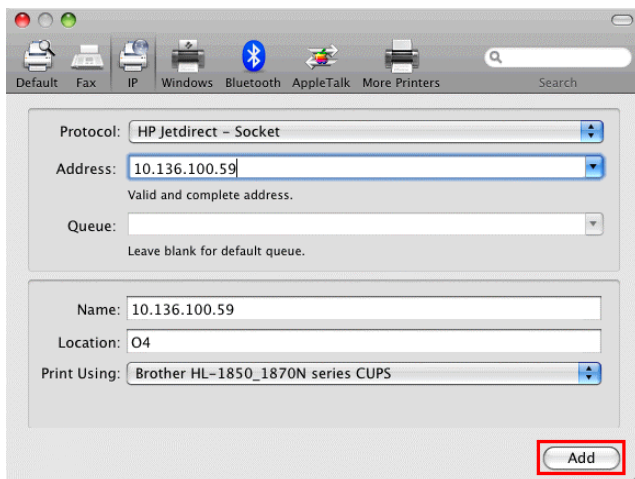
10. Enter the TCP/IP Address or DNS Name of the printer into the "Address" box.



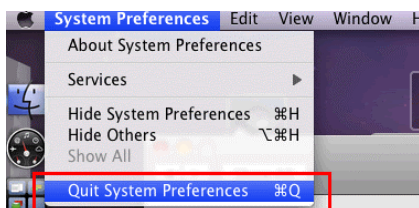
11. Make sure that "XXXXXXX + CUPS" is selected in the "Print Using" list. (Where XXXXXXXX is your model name.)



12. Click "Add". The printer is now available in the "Print & Fax" list.

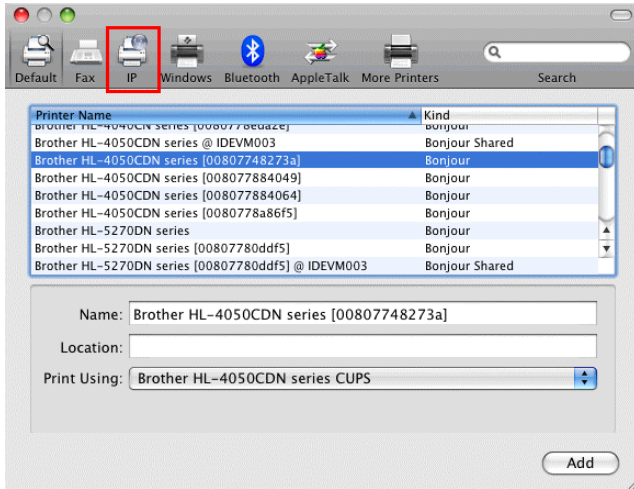


13. Select "Quit System Preferences" from the Apple Menu. The setup is now complete.

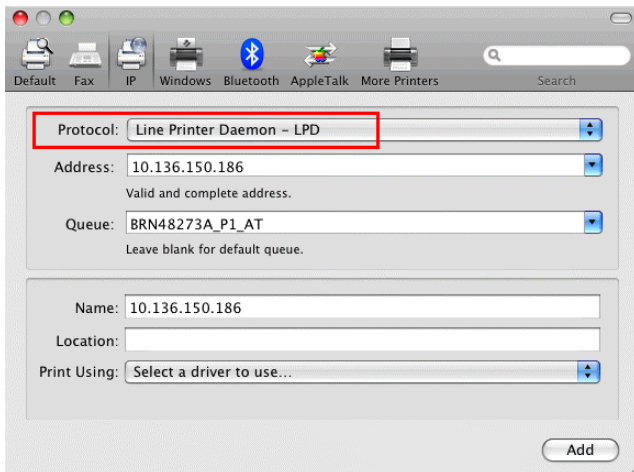


For the PostScript Driver:

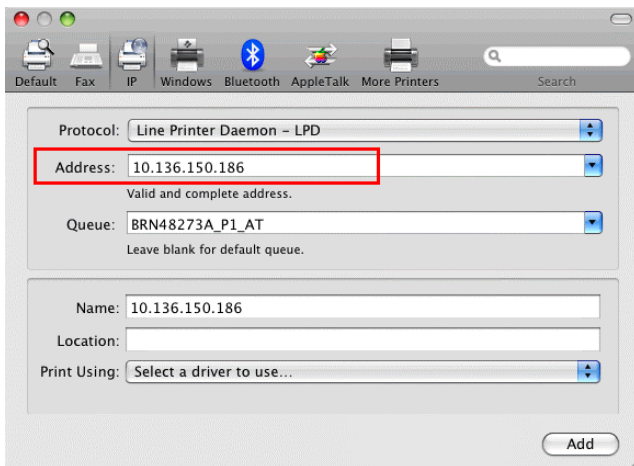
8. Click the "IP" icon which is located at the top of the dialog box.



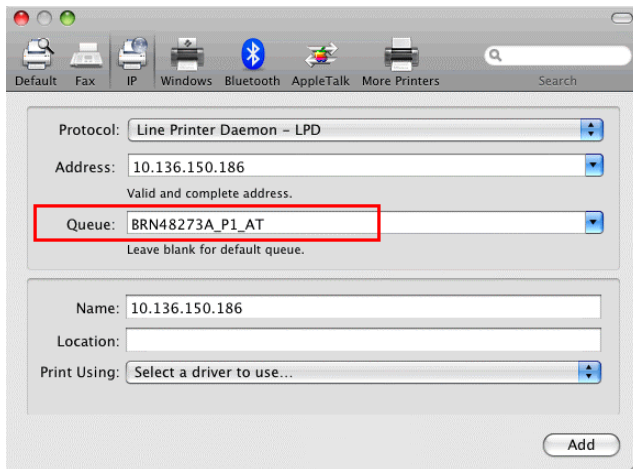
9. Select "LPD (Line Printer Daemon)" from the "Protocol" list.



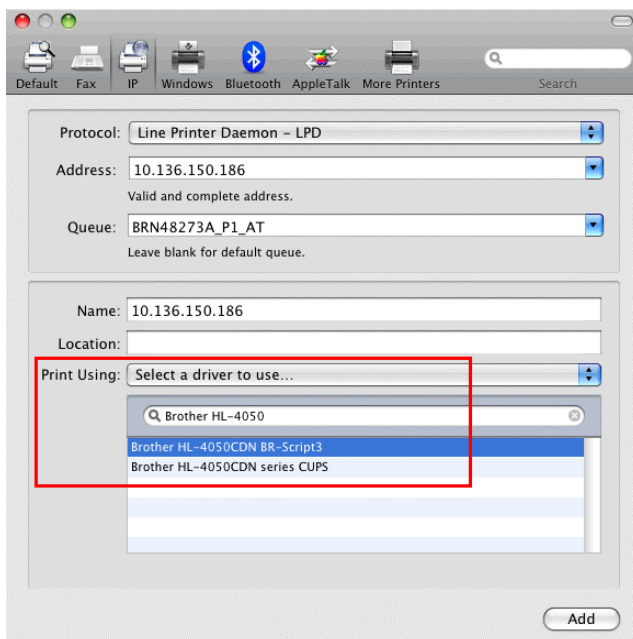
10. Enter the TCP/IP Address or DNS Name of the printer into the "Address" box.



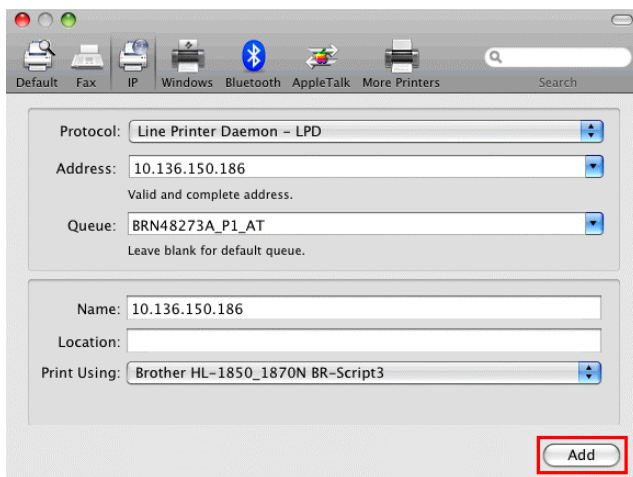
11. When specifying the “Queue Name”, use the value “BRNxxxxxx_P1_AT” where xxxxxx is the last 6 digits of the Ethernet address.



12. Select “Select a driver to use...” from the “Print Using” list and choose “XXXXXXX + PS” or “XXXXXXX + BR-Script3” from the list. (Where XXXXXXXX is your model name.)



13. Click "Add". The printer is now available in the "Print & Fax" list.



14. Select "Quit System Preferences" from the Apple Menu. The setup is now complete.

