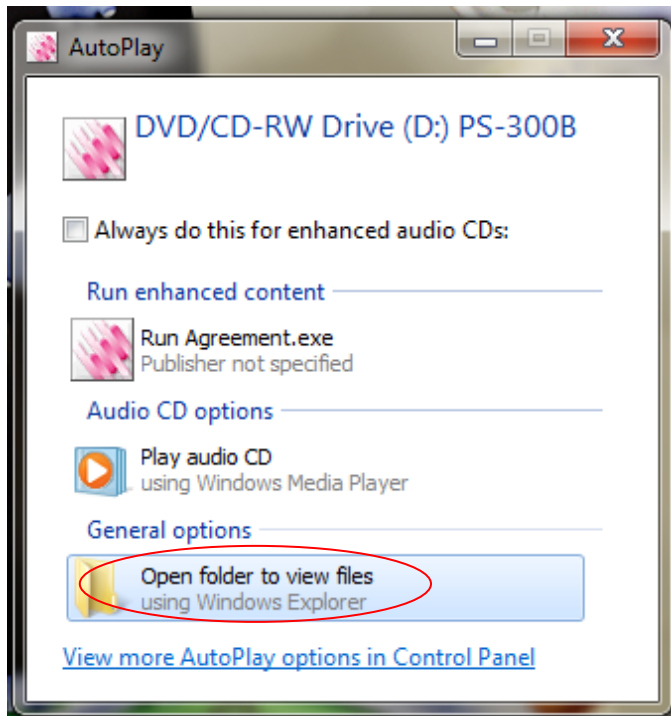


■ PS-300B Installation to a PC with Windows 7 (Ver.2.01 and before)

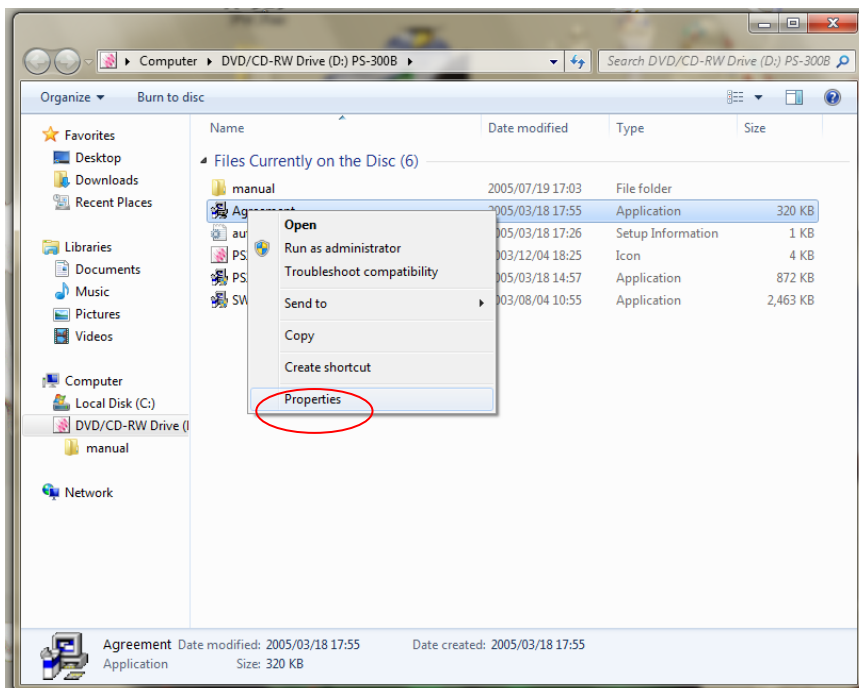
(Note 1) The proper operation of the software is confirmed, but the use of the software with Windows 7 is out of guarantee.

(The proper operation of the software was confirmed with Windows7 Ultimate English Version.)

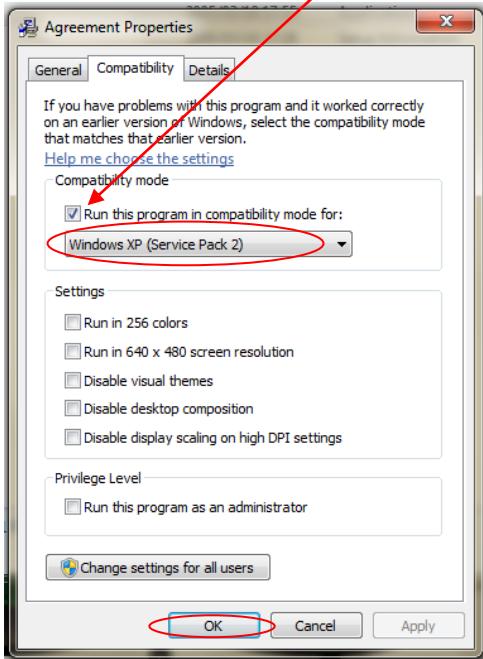
- Insert the CD-ROM of PS-300B into the CD drive, and wait for its automatic startup.
When the window shown below is displayed, click 'Open folder to view files'.



- Right-click the Agreement icon.
Select 'Properties'.



- Click 'Compatibility' tab.
Check 'Run this program in compatibility mode'.



*When Japanese or Chinese is selected as the language with PS-300B of Ver.1.0-2.01, please note the following:

When the operation is finished without saving data, an English warning message is displayed. However, the operation itself has no problem.

With Ver.2.10 and later, the message is displayed in Japanese or Chinese properly.

- Confirm 'Windows XP (Service Pack 2)' is selected and close the window by pressing the OK button.
Double-click 'Agreement'.
- After this, carry out the installation of the PS-300B with the same process as with Windows XP.